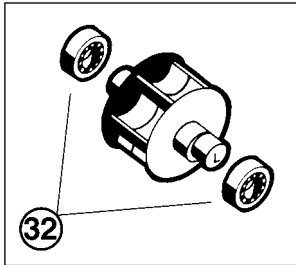
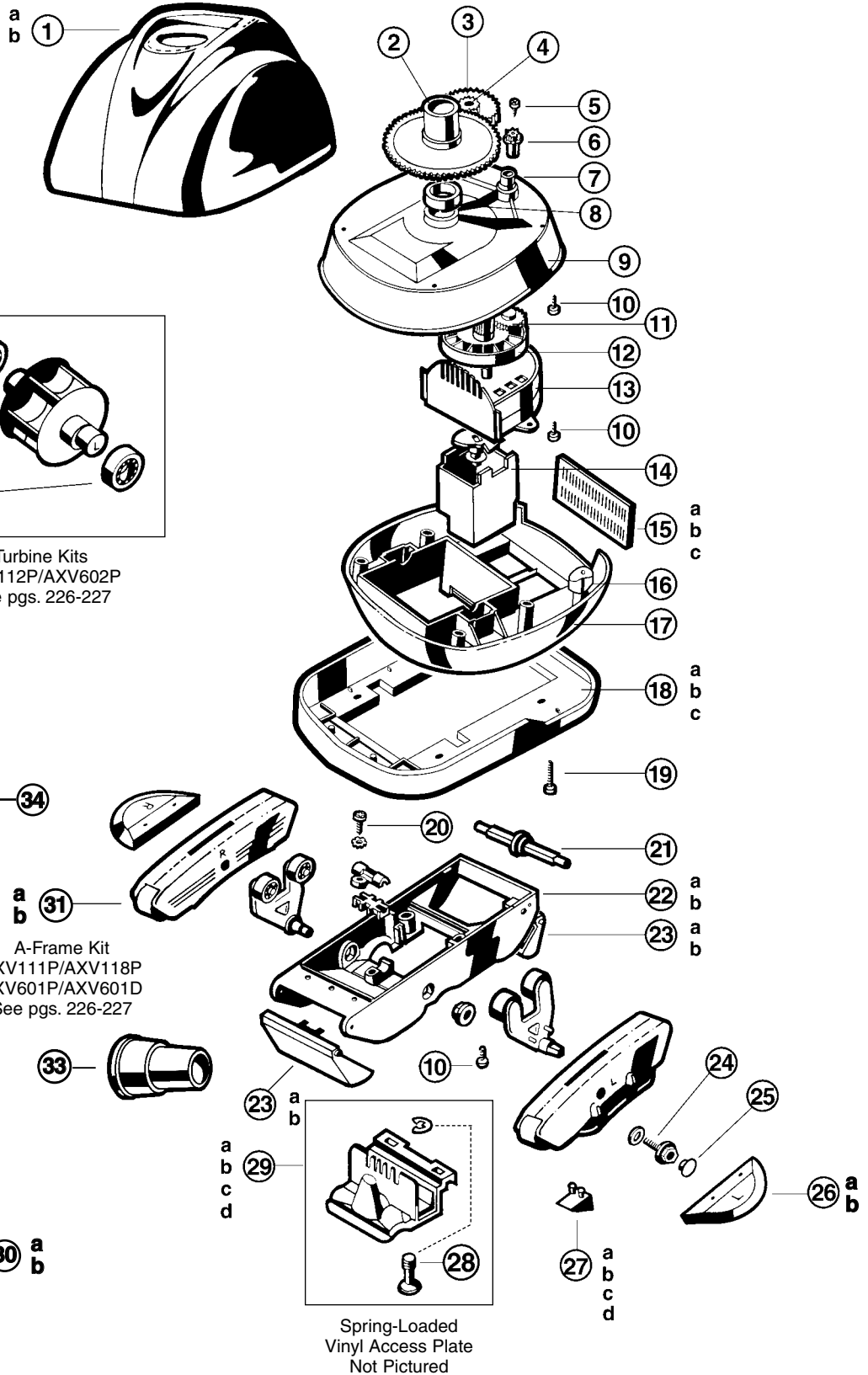




# Navigator®

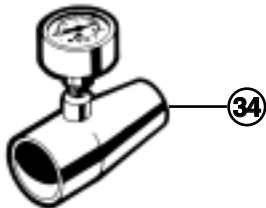
CONCRETE, DESERT AND VINYL MODEL REPLACEMENT PARTS

## Parts Diagram

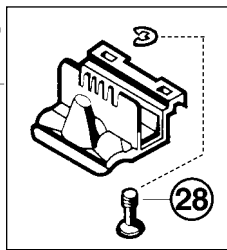
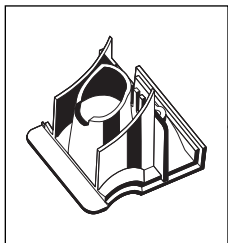
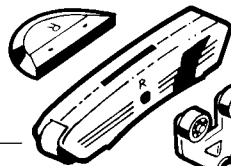


Turbine Kits  
AXV112P/AXV602P  
See pgs. 226-227

V096P In-line Gauge



A-Frame Kit  
AXV111P/AXV118P  
AXV601P/AXV601D  
See pgs. 226-227



Spring-Loaded  
Vinyl Access Plate  
Not Pictured

Cleaners

### Parts Listing

Ref. No.	Part No.	Description	Ctn. Qty.	No. Req'd
1a	AXV411LG	Top shell for Navigator concrete, light gray (exchange only)	*	1
1b	AXV416BG	Top shell for Navigator vinyl, burgundy (exchange only)	*	1
2	AXV070	Cone gear, clear	*	1
3	AXV301	Intermediate gear	25	1
4	AXV309	Intermediate gear shaft	*	1
5	AXV068	Spindle gear screw	*	1
6	AXV303	Spindle gear	25	1
7	AXV066A	Spindle gear bushing	25	1
8	AXV306	Cone gear bushing	*	1
9	AXV060WH	Upper Middle body, white	*	1
10	AXV065P	Upper body screw (6 pack)	*	1
11	AXV064A	Medium turbine drive gear	25	1
12	AXV062C	Medium turbine	25	1
13	AXV009	Medium turbine case w/axle	25	1
14	AXV408P	Gear box assembly	25	1
15a	AXV051ABK	Rear screen, black	*	1
15b	AXV051ABG	Rear screen, burgundy	*	1
15c	AXV051ALG	Rear screen, light gray	*	1
16	AXV054P	Float (2 pack)	*	1
17	AXV050CWH	Lower middle body, white	*	1
18a	AXV605LGP	Bumper, light gray	10	1
18b	AXV605WHP	Bumper, white	10	1
18c	AXV605BKP	Bumper, black	10	1
19	AXV057P	Middle Body screw (6 pack)	*	1
20	AXV313	Lower body screw (4 pack)	*	1
21	AXV031B	Flap Adjuster	25	1
22a	AXV230DBK	Lower body, black	*	1
22b	AXV230DWH	Lower body, white	10	1
23a	AXV434BKP	Flap kit, black (2 flaps, front & rear springs)	50	1
23b	AXV434WHP	Flap kit, white (2 flaps, front & rear springs)	50	1
24	AXV015P	Pod screw kit (2 hex head screws & 2 washers)	*	1
25	AXV016P	Pod plug (6 pack)	*	1
26a	AXV604BKP	Wing kit, black (right and left wings)	50	1
26b	AXV604WHP	Wing kit, white (right and left wings)	50	1
27a	AXV414P	Pod shoes, concrete (4 pack)	50	1
27b	AXV413P	Pod shoes, vinyl (4 pack)	50	1
27c	AXV014CP	Pod shoes, ceramic (4 pack)	50	1
27d	AXV014SP	Pod shoes, slotted (4 pack)	50	1
28	AXV314P	Captive Screw & Retaining Clip	*	1
29a	AXV441	Spring-loaded adjustable access cover assembly for concrete models (prior to 1996)	25	1
29b	AXV441BK	Spring-loaded adjustable access cover assembly for concrete models, black (prior to 1996)	*	1
29c	AXV440	Spring-loaded adjustable access cover assembly for vinyl models	25	1
29d	AXV141	Fixed access cover ass'y for concrete & desert models	25	1
30a	AXV603	Fixed access cover ass'y for concrete and desert models ( for Model # 925C)	25	1
30b	AXV603A	Fixed access cover ass'y for vinyl models (for Model # 925V)	25	1
31a	AXV417WHP	Pod kit, white (right/left pods, plugs, screws & washers)	25	1
31b	AXV417BKP	Pod kit, black (right/left pods, plugs, screws & washers)	25	1
32	AXV055P	Turbine bearings (2 pack)	50	1
33	AXV093CP	Skimmer Cone	50	1
34	V096P	In-Line Vacuum Gauge	25	1
—	V574P	Flow gauge	25	1
—	AXV079VP	Medium turbine/spindle gear kit (medium turbine, drive gear, bushing, vinyl spindle gear, screw, medium turbine axle, intermediate gear, intermediate gear axle)	25	1

**COLOR KEY:** WH = White, BK = Black, LG = Light Gray, BG= Burgundy

\*Special order.